

MIGUEL

VILACHA

Port & Cruise Service Center KAOHSIUNG

RTA-OFFICE

Design Competition

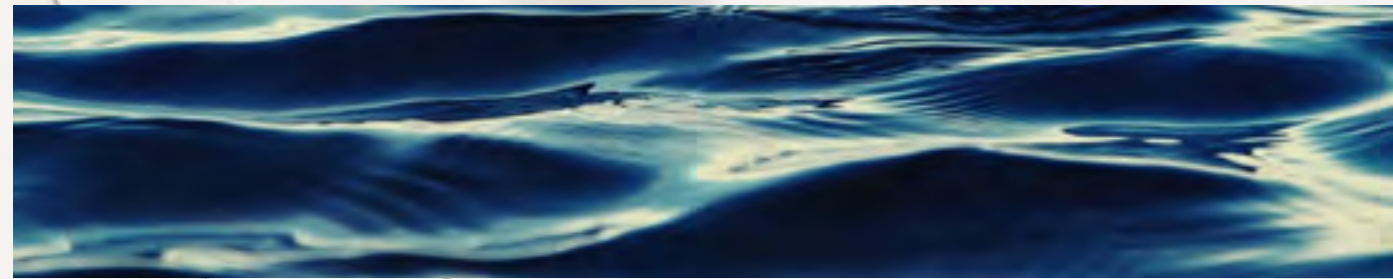
World Architecture Award

Kaohsiung / Taiwan

2010



Surface fluidity in water can generate its own natural algorithms through physics. There are no seams in water, which allows the algorithmic sequence to be able to merge with itself at any stage within the movement. For example; a wave, regardless of its size, that travels towards calm waters doesn't collide, it's a seamless transaction. We applied this theory to the aesthetics of the façade, landscape and interior. The population also fit into this scheme as the circulation design meanders them in and out of the building, much like minerals in rivers.



Block 39 Center for Promotion of Science

RTA-OFFICE

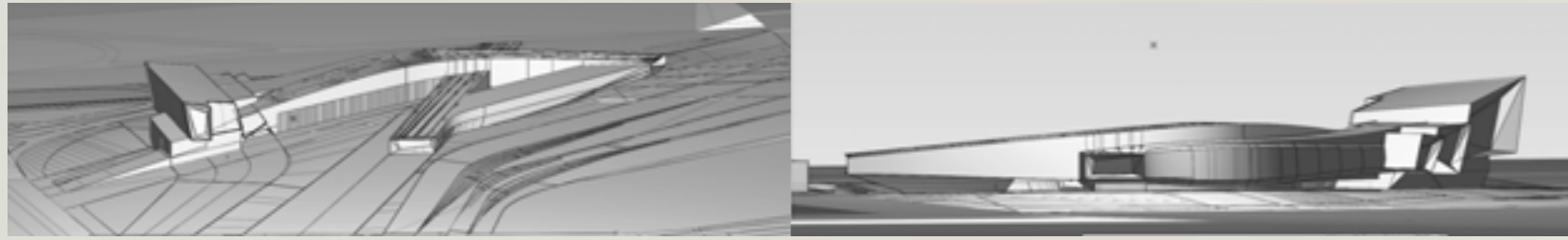
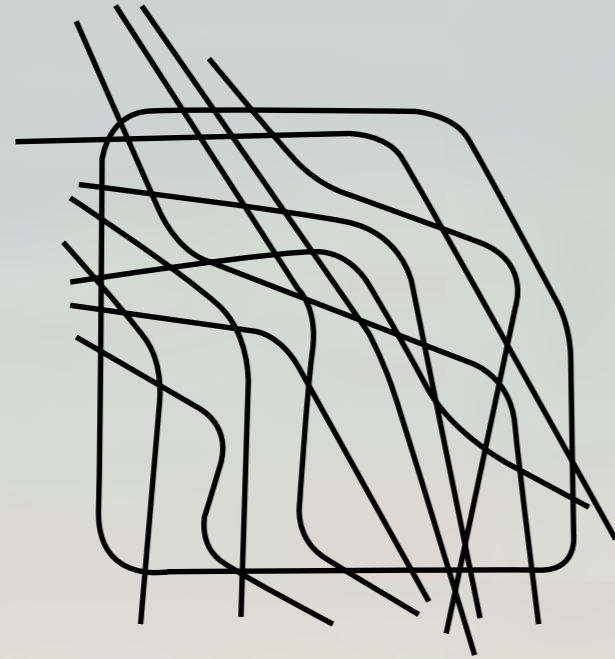
Design Competition

Honorable Mention Award

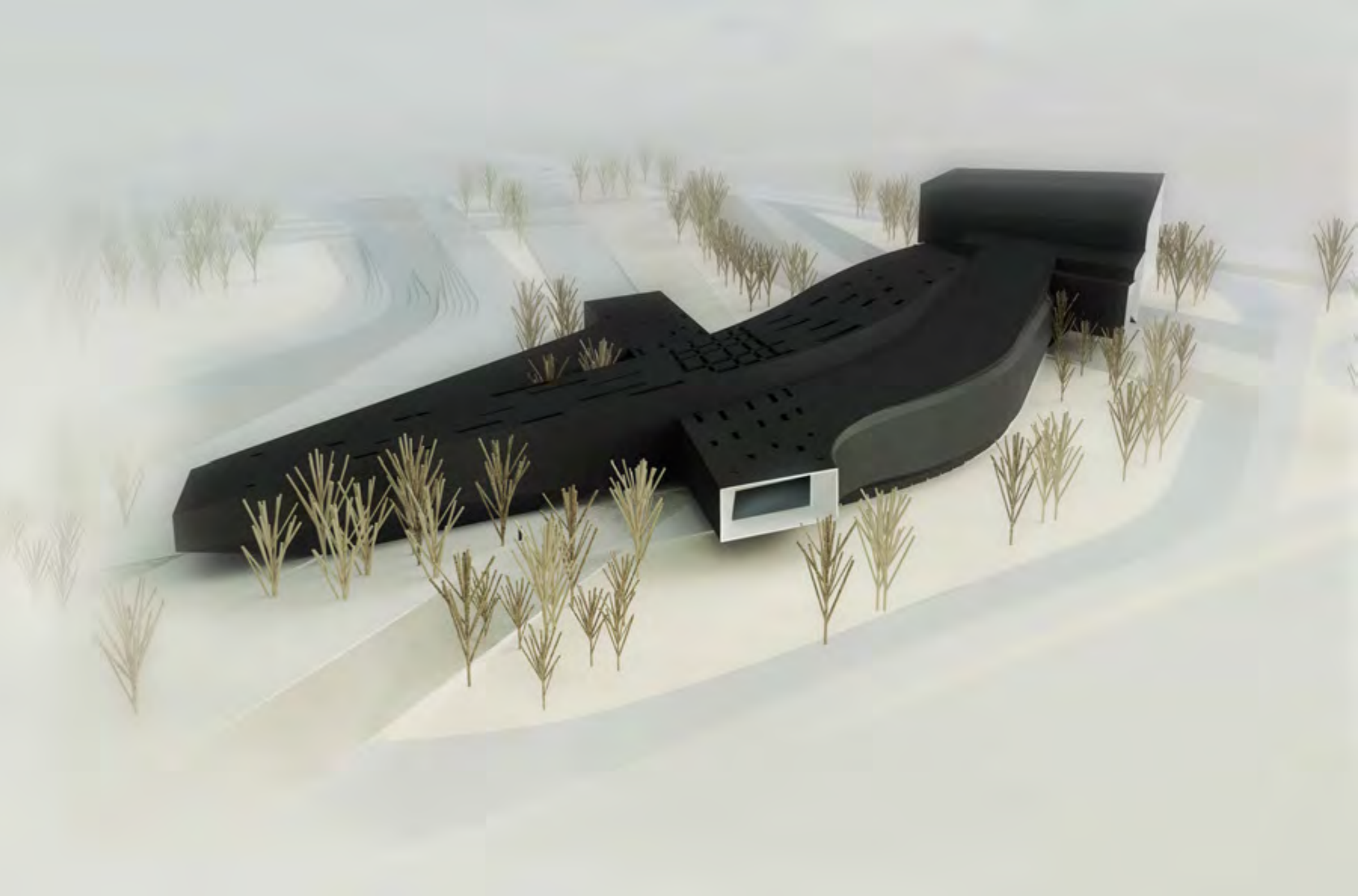
Belgrade / Serbia

2010





After looking at Google Earth Images of the surrounding area we found some patterns of how the people move around this rigid building trying to always cut the way. We decided to make a building, which generates an event; an institutional, urban expression pole becomes an international lure. The studio seeks to achieve the occupation of the site and its transformation, to provide guidelines for a new fluid system that conditions it, democratizes it, liberates it from the strict structures of urban organization and, finally, to give it back to the city. This way, a new a knowledge place is created while increasing the feeling of an open, continuous and fluid space, without any obstacles. A perceptive, dynamic environment.



TROY MUSEUM

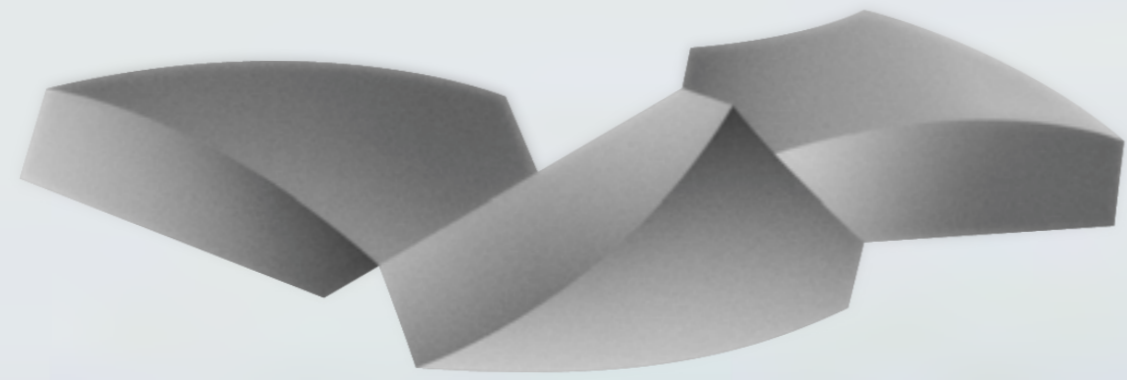
RTA-OFFICE

Design Competition

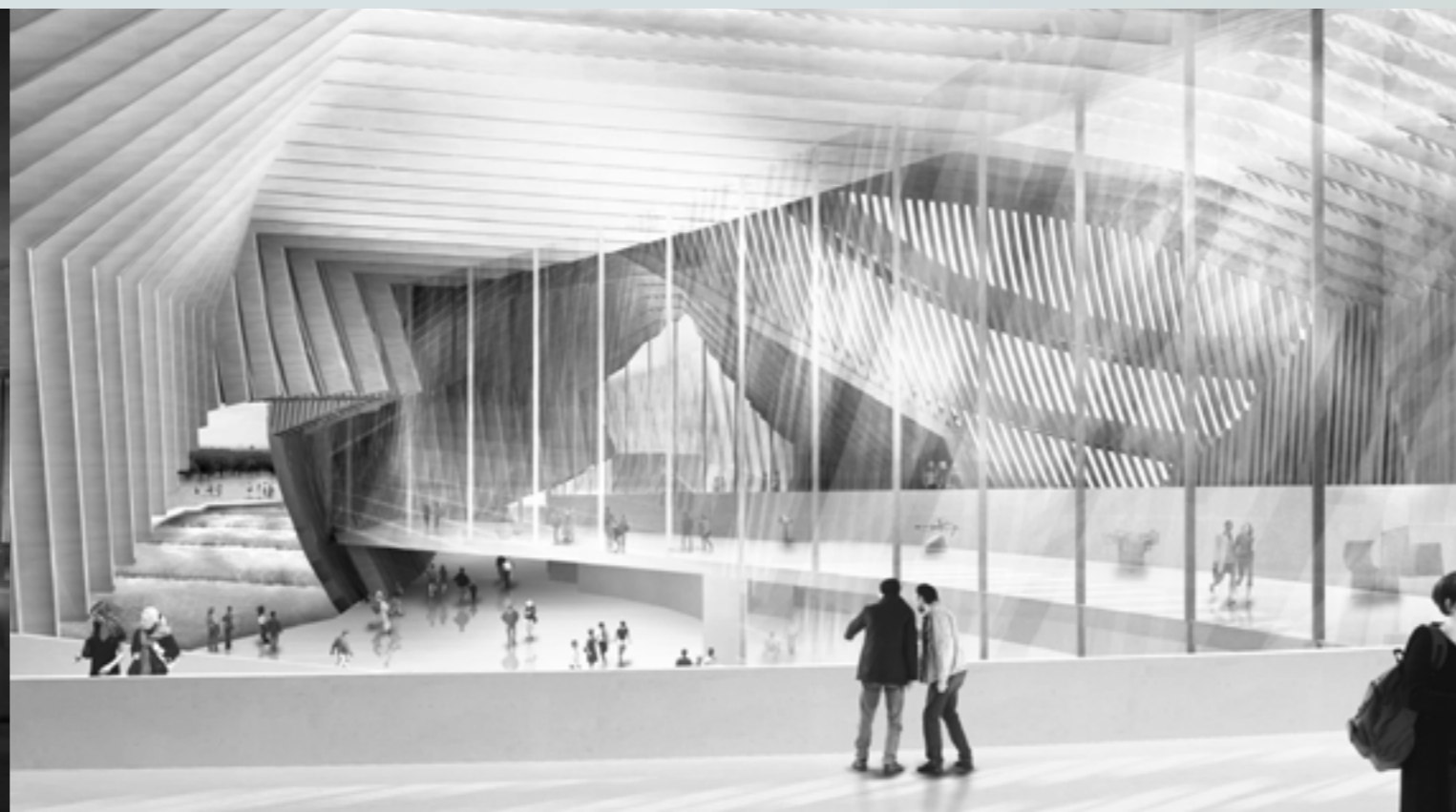
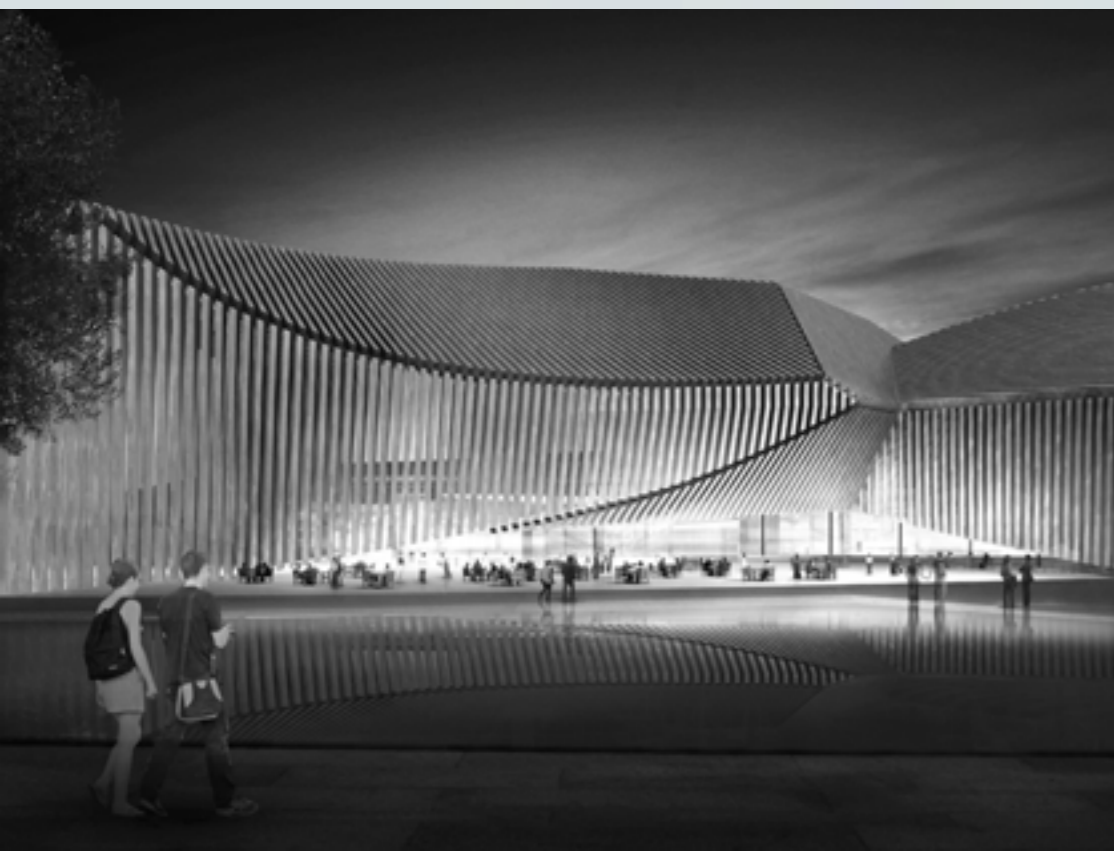
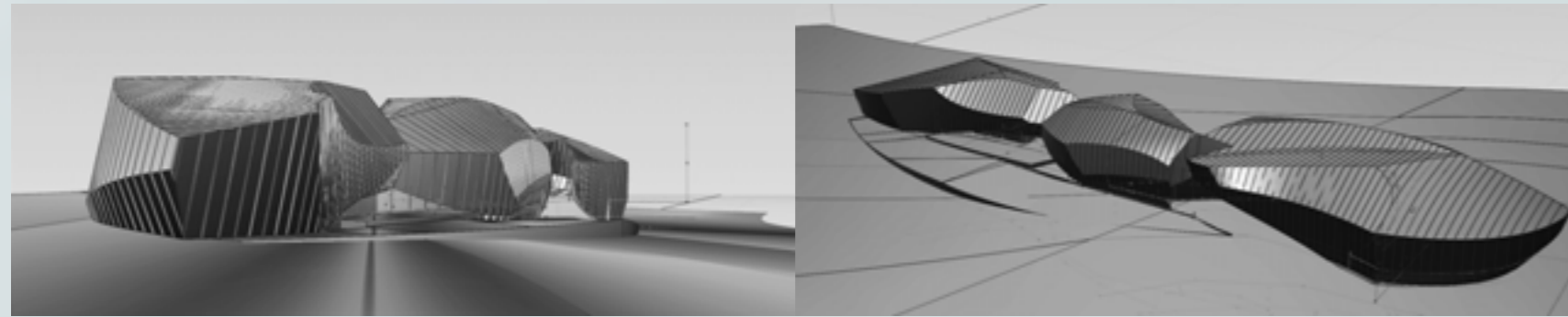
Canakkale/ Turkey

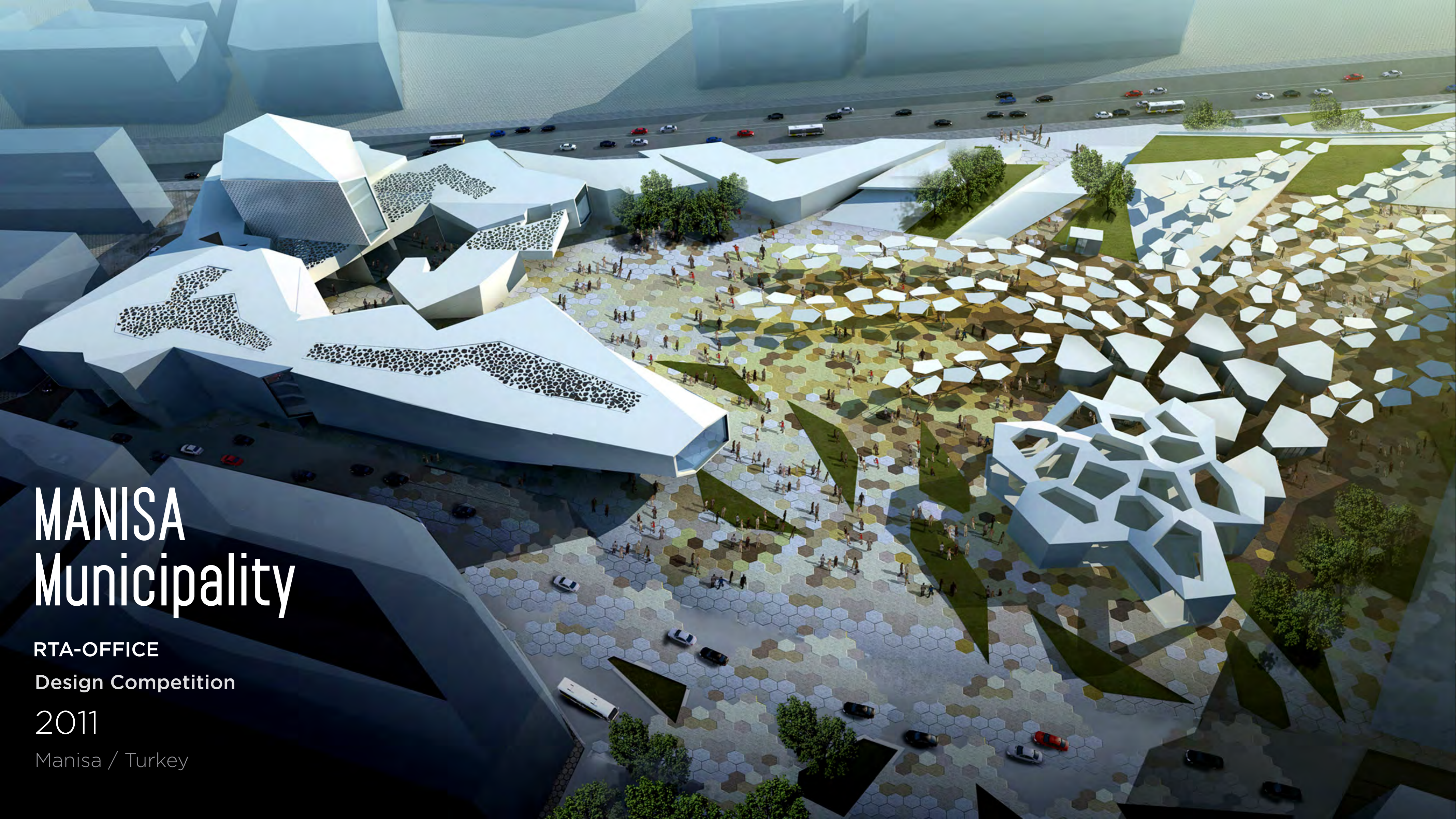
2011





We build this volume in correlation to the object and art of Troy. The curved contours of the helmet come to a sharp halt that gives the helmet its vigorous and intimidating stance, whilst the surface area has a smooth, bowed surface which gives the helmet its sleek appeal. We applied this synchronization into the building by defining the geometries of the rigorous volume, then applying an essence of curvature into the planes, whilst maintaining the clean cut edges.





MANISA Municipality

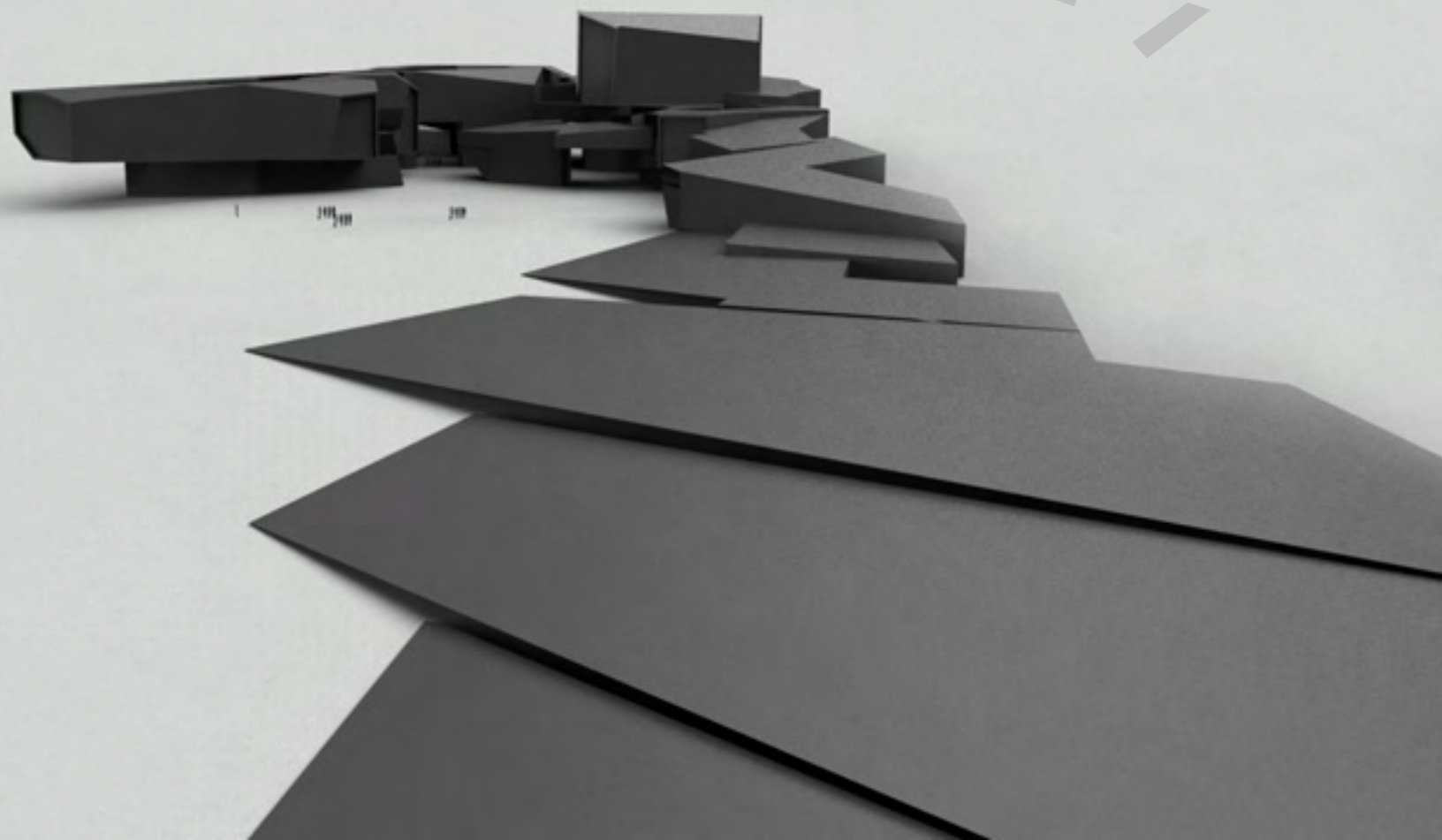
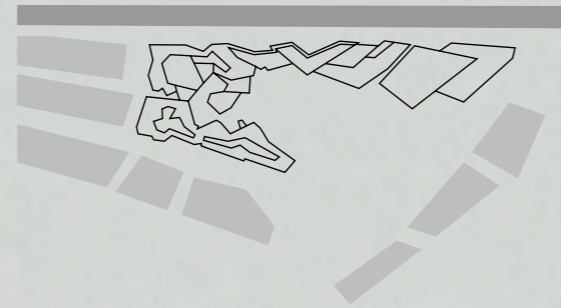
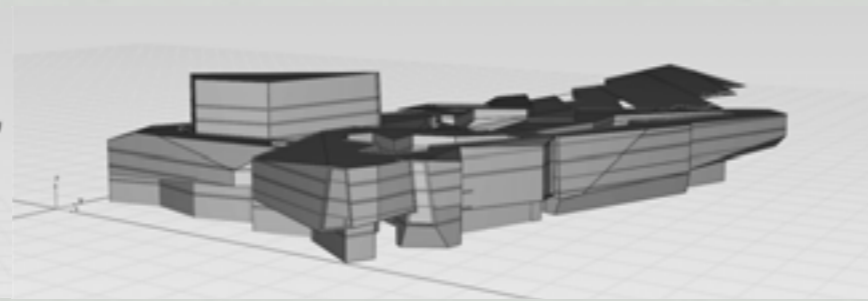
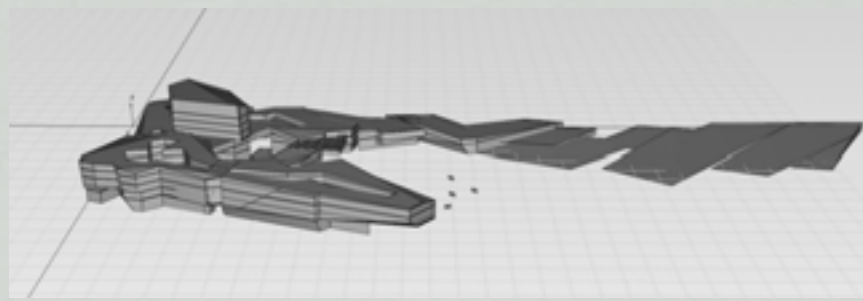
RTA-OFFICE

Design Competition

2011

Manisa / Turkey

The objective is for the set of buildings to become environmentally responsible, profitable and healthy, where people can live and work in a high-quality environment. In order to achieve this, we propose a continuous outward appearance, which will establish a strong presence within the urban core. The site includes two horizontal buildings and a tower unified with an expansive pergola. Woven between the structures is an open-air community market covered by a sprawling roof structure. Its perforated canopy resembles an open netting which delicately hovers above patio spaces sheltering individuals from direct light and introducing gentle breezes.





CAMLICA
Telecommunication
Tower

RTA-OFFICE

Design Competition

2011

Istanbul / Turkey

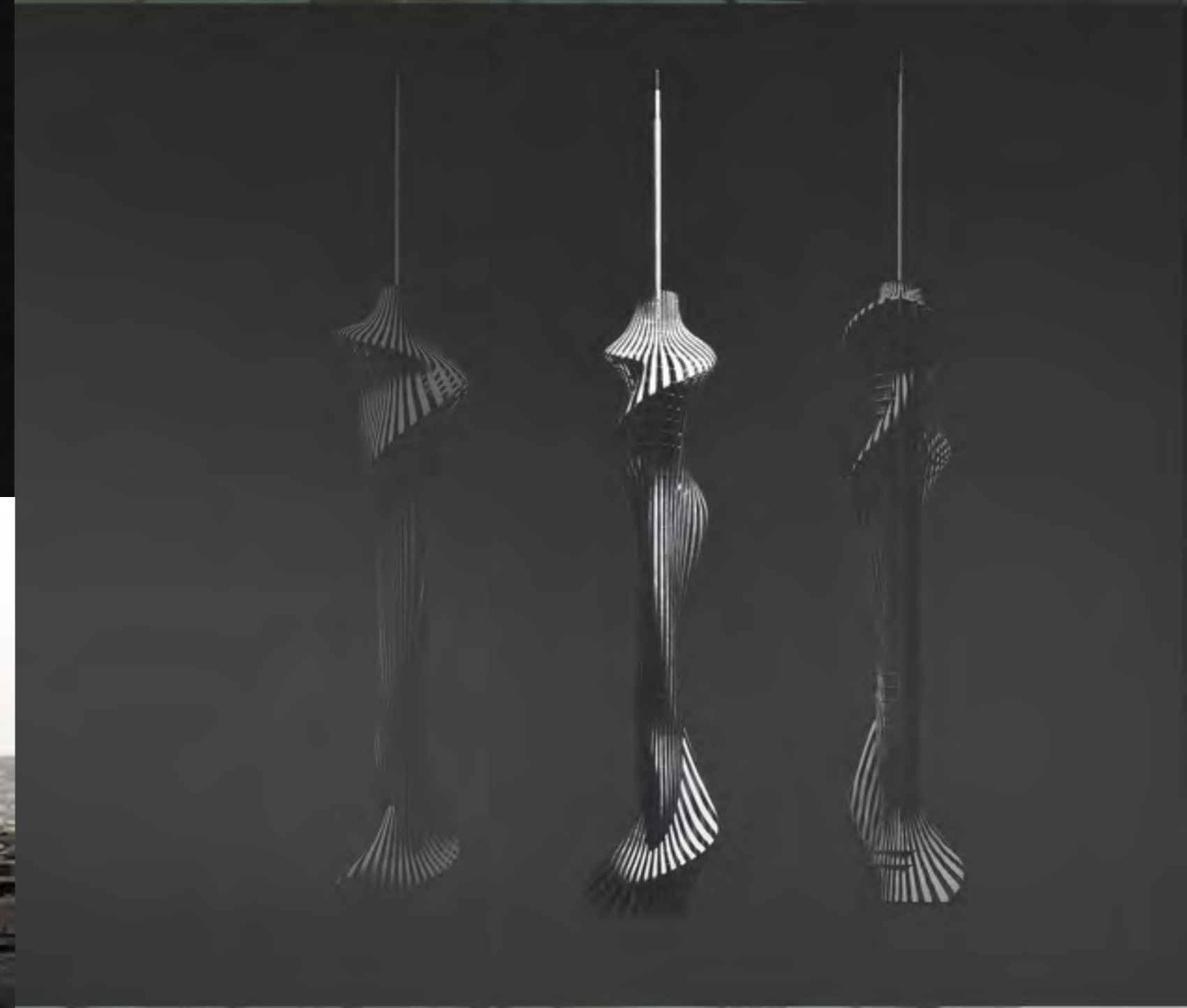


Our proposal comes in response to this wonderful and strategic point that has to rise up the Telecommunications Tower that the City of Istanbul plans to build.

The topography of mountains within the Asian side of Istanbul ends in the mountains of Çamlıca, the gravitational center of Istanbul. It is the center of population density of more than 15 million, and that revolves around this center.

Our proposal offers an end to the conquest of the buildings and artifacts here. That is why we should not build any kind of building, but an object that clearly reveals the natural attributes of the place. Our proposal is simple and in a natural way, as an element that does not belong to the city, but belongs to the landscape.

Maybe we're talking about a minaret sculpted by the wind? Maybe we're talking about a twenty-first century lighthouse? Or maybe not. We leave the citizen freely to find the object identified.



WUHAN
CROSSOVER
CENTER

RTA-OFFICE
Client Request

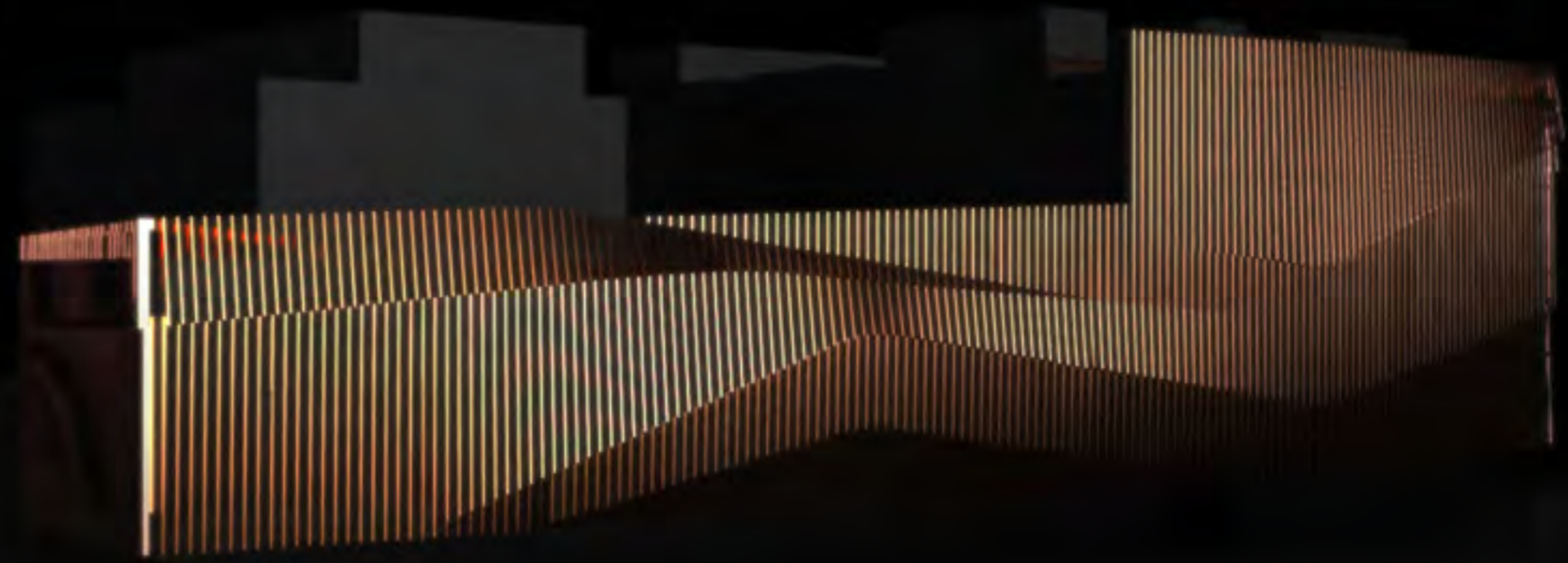
wuhan / China

2012





The challenge was to remodel a group of buildings and create a modern crossover centre where people meet and work. To do this, we decided to group all the buildings with a unitary facade with strong and easy language. Also, we create a centre plaza to isolate the people from the city on a warm and calm environment.



AWAZA Congress Hall

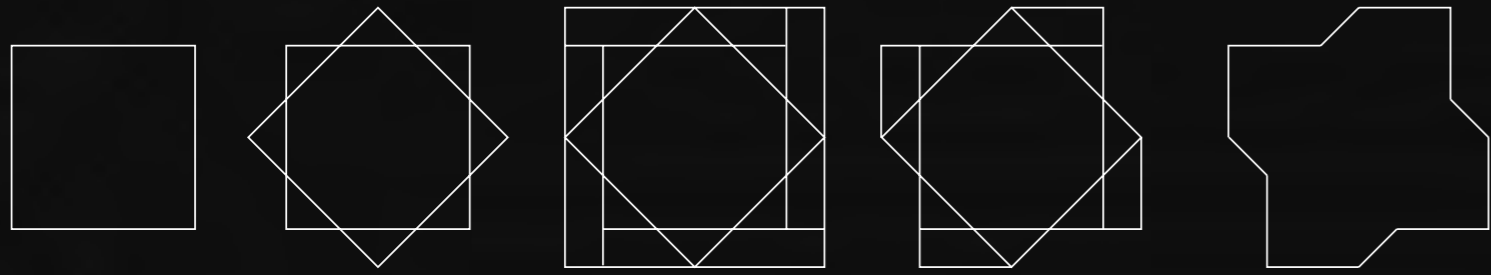
RTA-OFFICE

Design Competition

Awaza / Turkmenistan

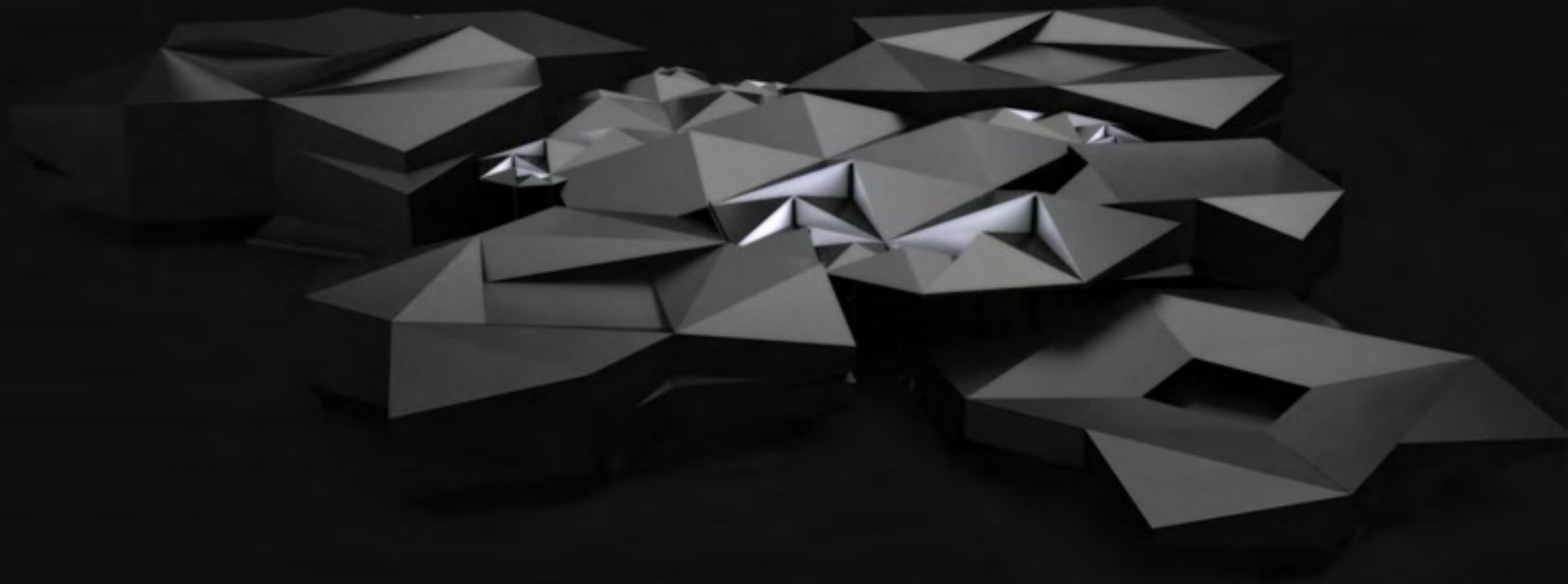
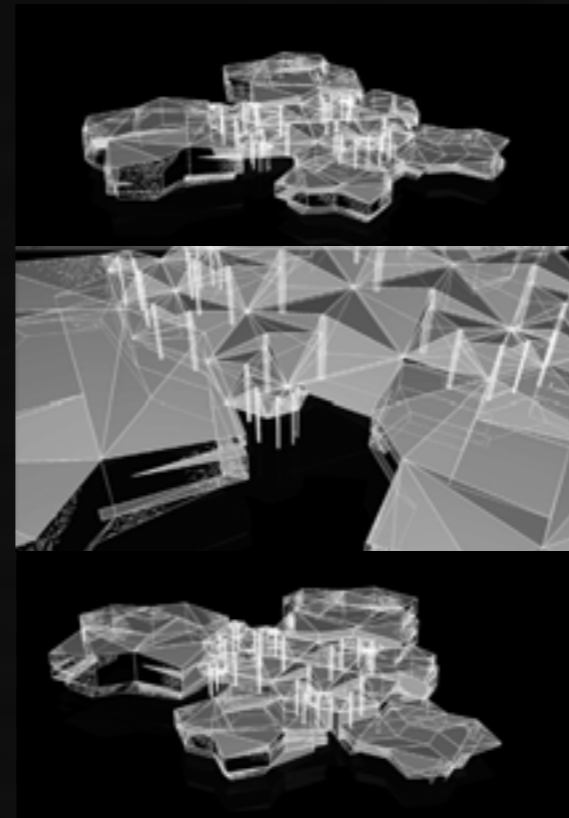
2012





The five volumes of the buildings derive from the analysis, understanding and development of the shape of the Turkmenistan traditional architecture. Their massive and iconic shape not only represents ancient architecture monuments such as the "Ruins of Ancient Merv", it also responds to a climate requirement that balances the temperature differences between interior and exterior spaces.

A great hall unifies the intersections of these five volumes with a spectacular shaped roof in a central space. This particular structure responds not just to a geometric formula like a scheduled sequence but also a systematized construction by the repetition of the same pattern.



Qingdao
Nanjing Road
Mixed Use Area

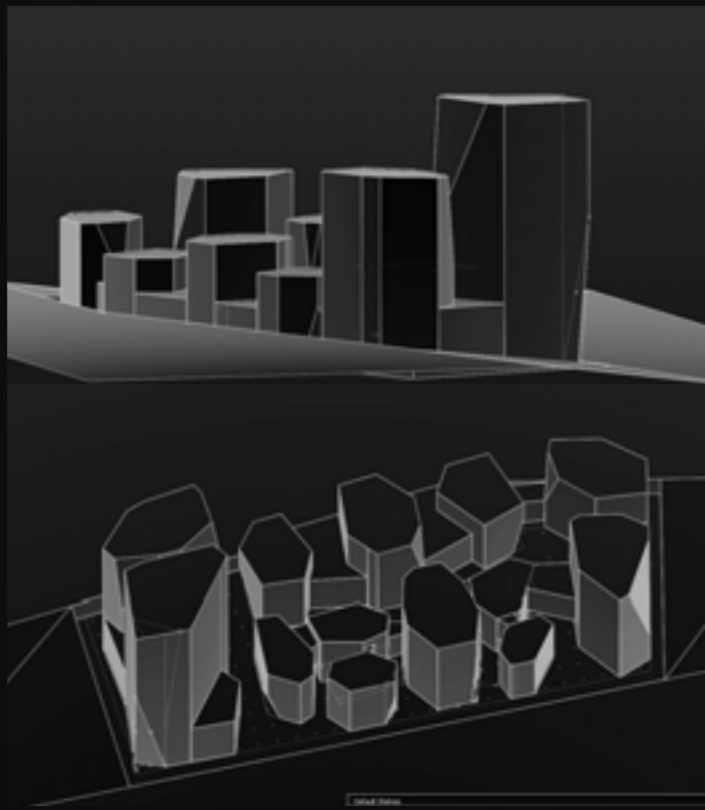
RTA-OFFICE

Client Request

Qingdao / China

2012





The goal is to create a new and contemporary urban space for the city of Qingdao. We propose to use its biggest producer, the Tsingtao brewery, as an inspiration. This strong reference projects on the project with the colors and translucent of the well-known liquid. Different uses are distributed in buildings: Residential, Hotel, Offices, Commercial, Sport, and Cultural. All public functions are placed on the ground level and on lower floors, giving social life to the complex.



Shanghai
Hongqiao

Mix Use

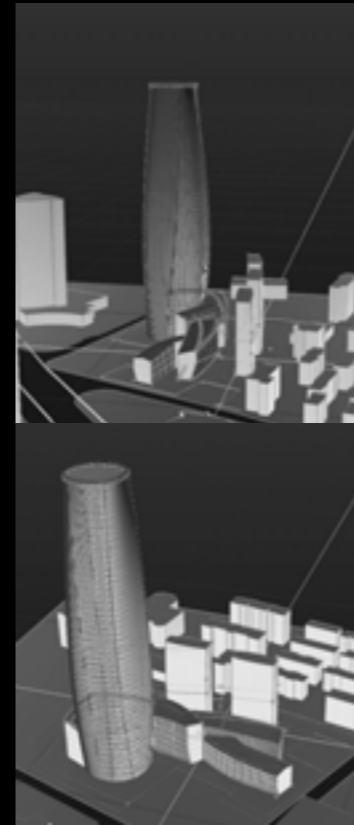
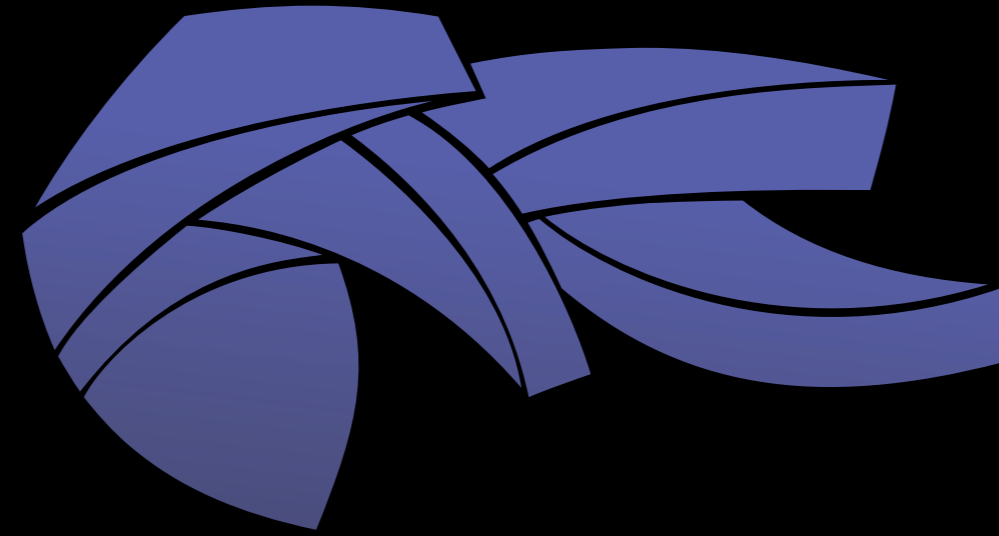
RTA-OFFICE

Design Competition

Shanghai / China

2012





A sports related facility utilized for offices and a commercial area emerges as a tribute to the human body in motion. Four Commercial volumes blend together and wrap around the office tower. The tower is shaped from a singular stroke that gives a clean and elegant dynamic.



Anhui Provincial Art Museum

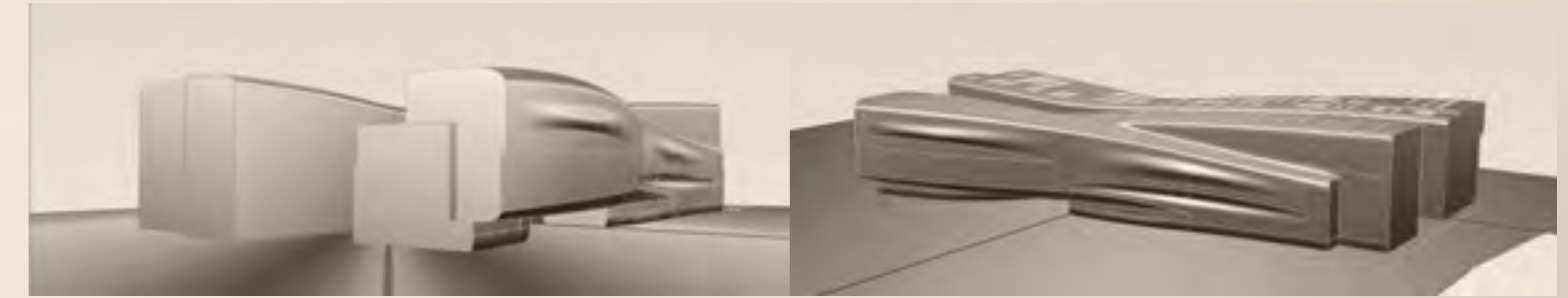
RTA-OFFICE

Design Competition

Hefei/China

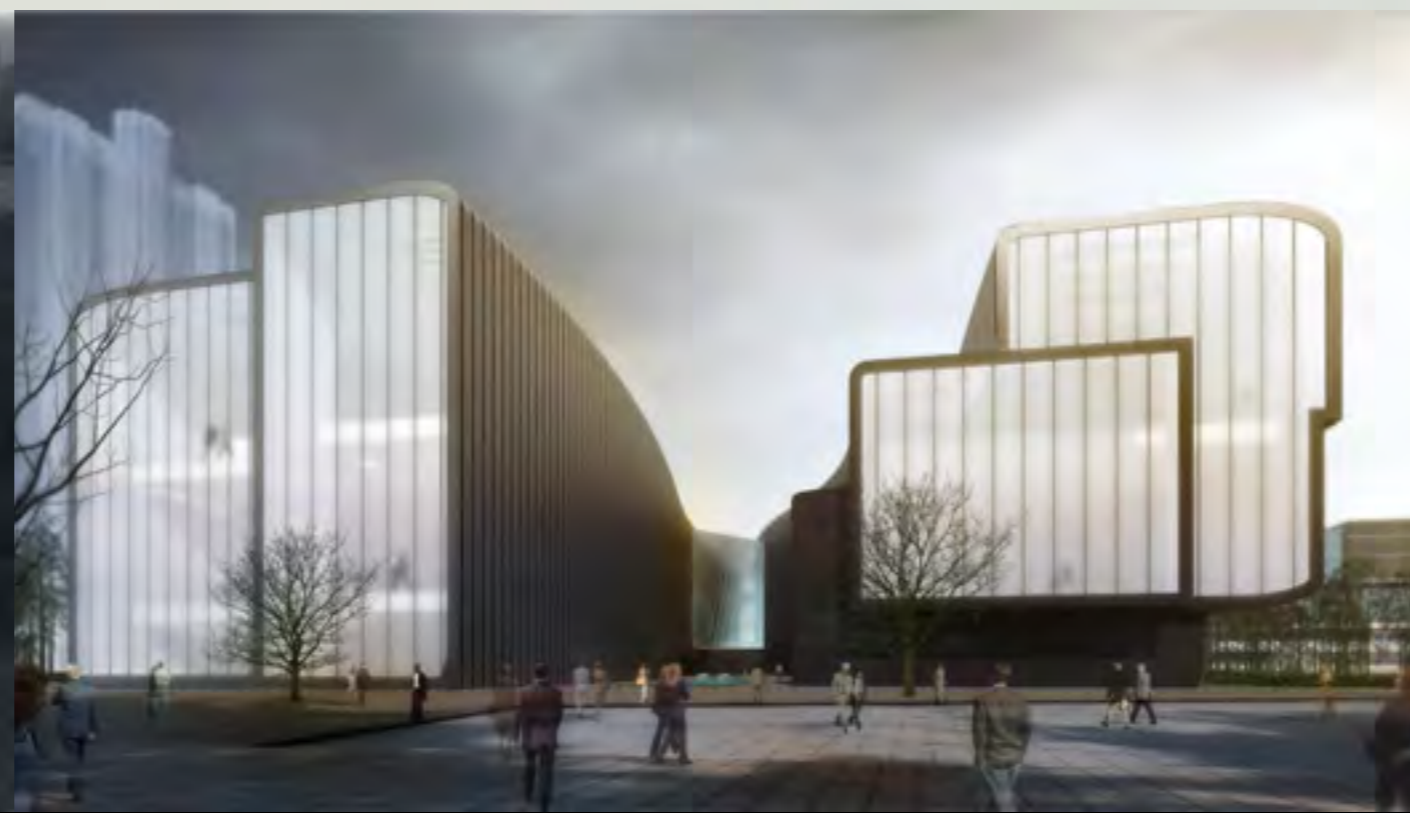
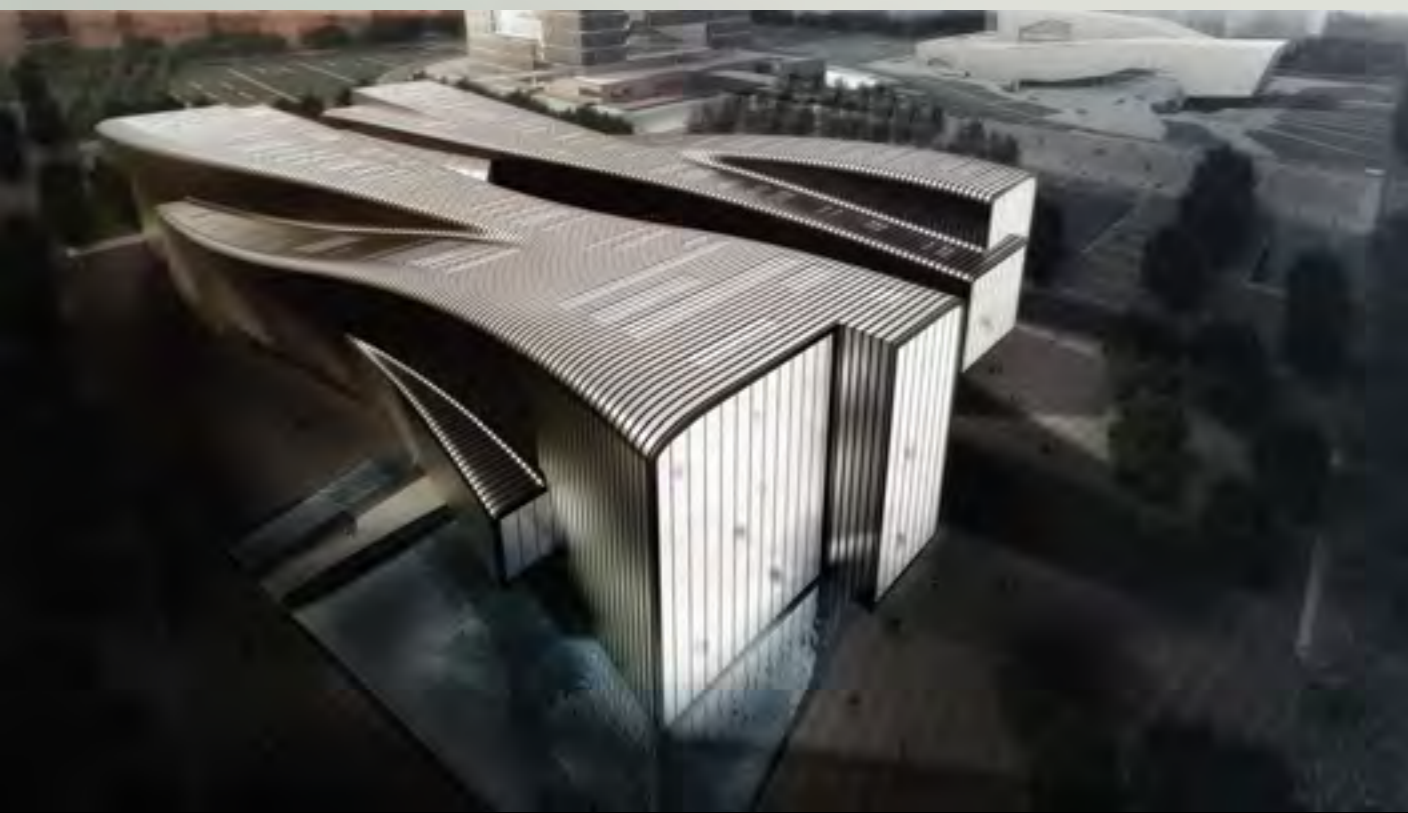
2012





The Anhui Provincial Art Museum is located in a new politic and cultural district in Heifei, China. The new building will occupy the southwest corner of the park. The project finds inspiration in the rugged mountain landscapes, the natural elements, and the provincial artwork – silk painting and wood carving – unique of Anhui Province.

Two separate buildings, they are seen as a unified body through the poetic design of the skin.



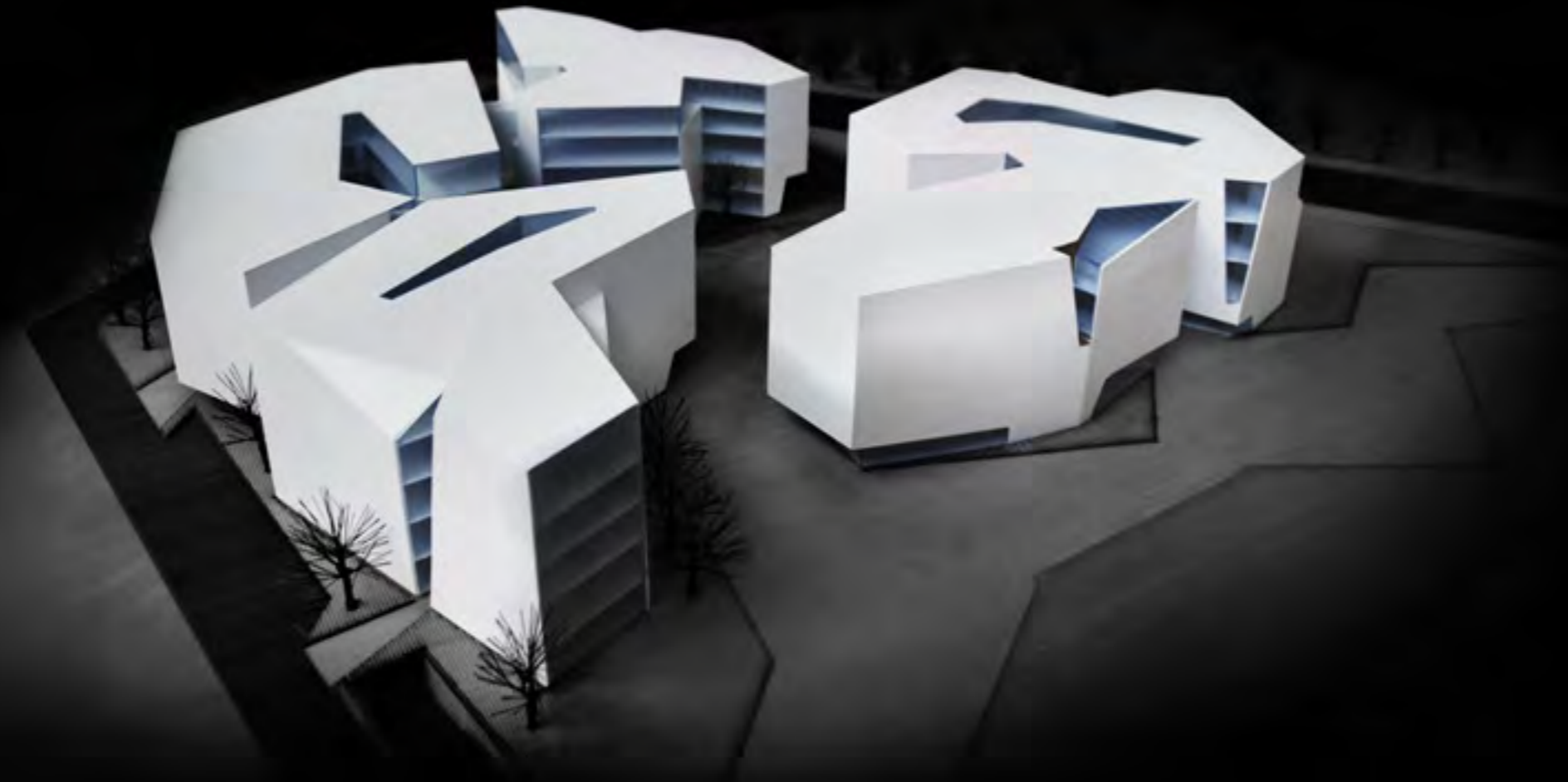
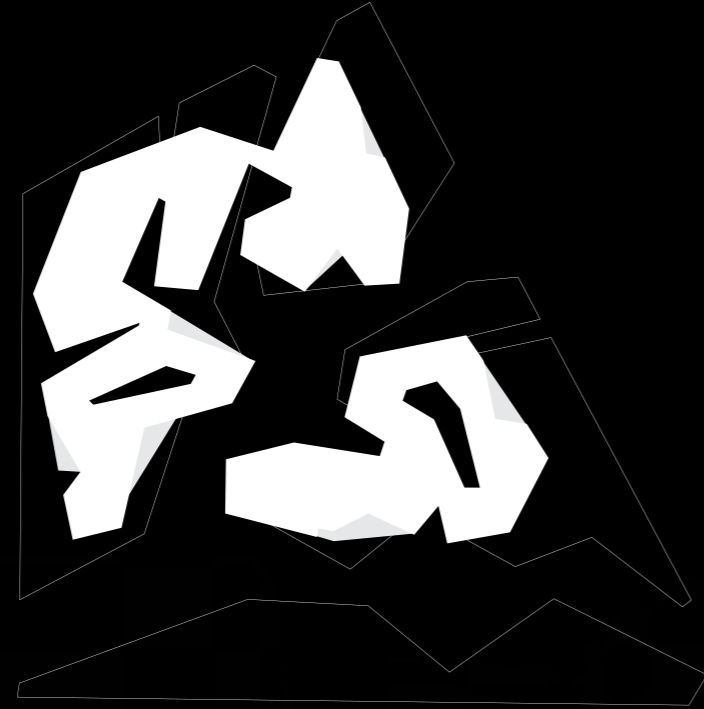
Urban Planning , Exhibition Center & Archive

RTA-OFFICE
Design Competition

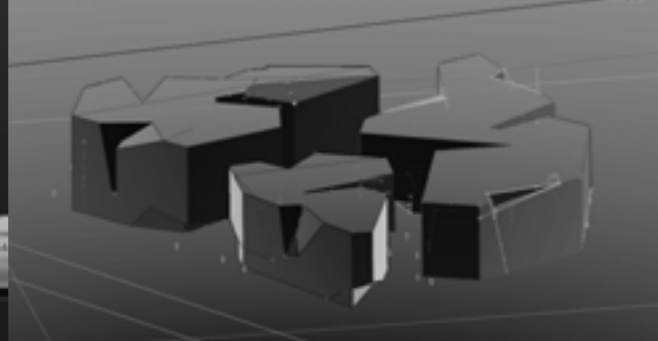
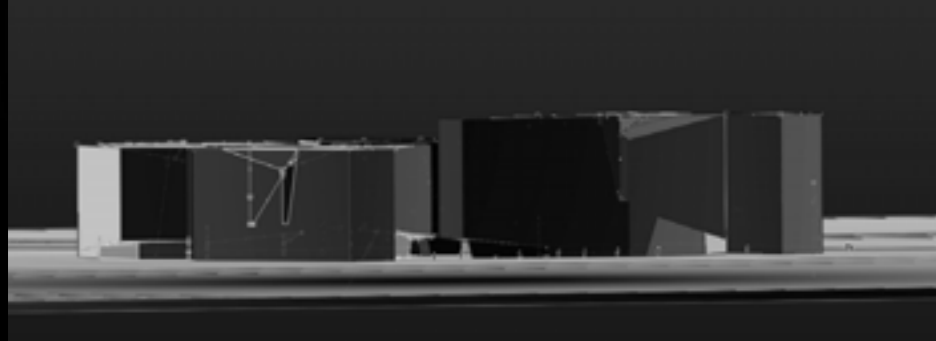
Winning Design
Anhui / China

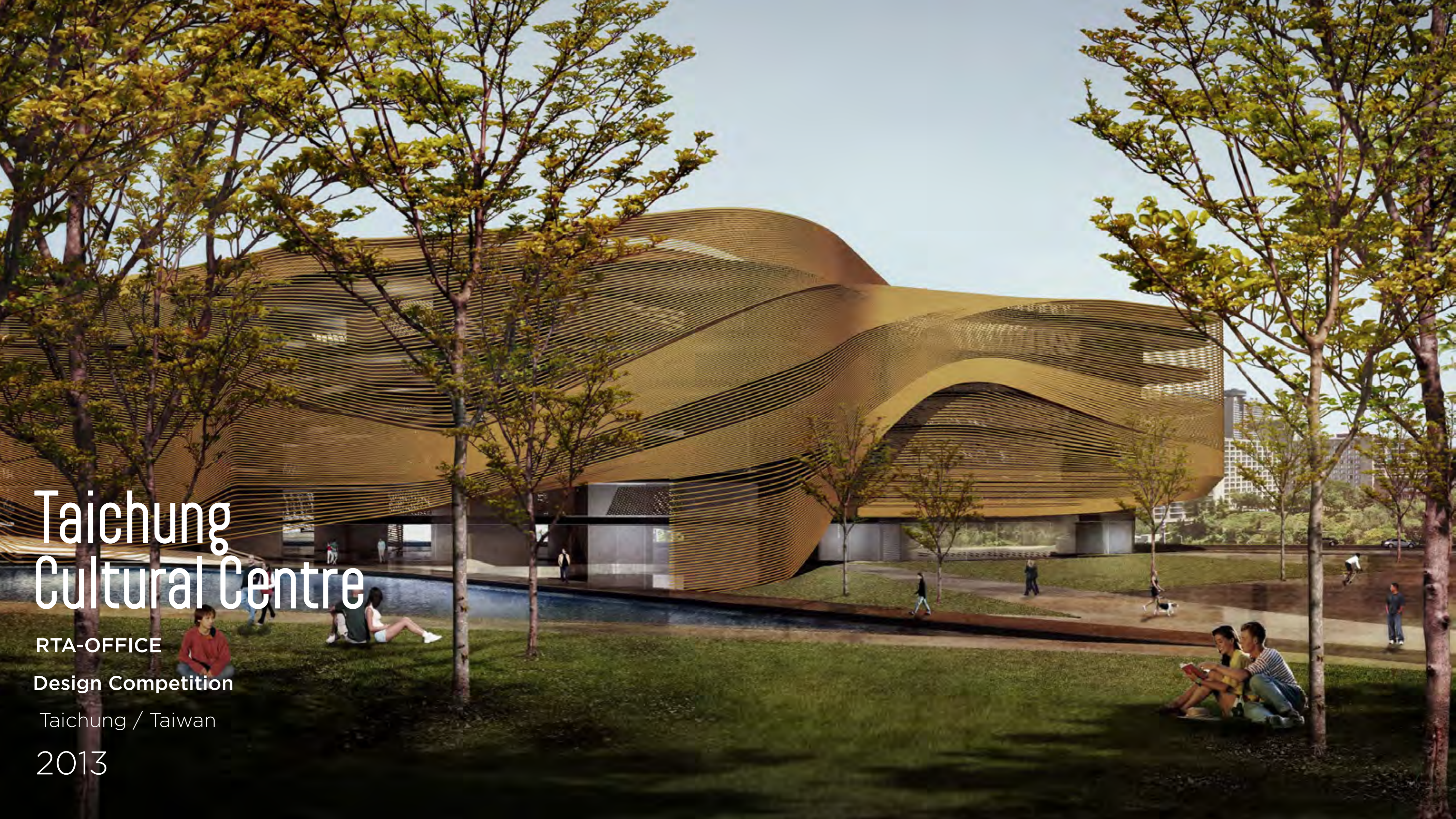
2012





Intended to be a strong architectural landmark we created a composition of buildings (Urban planning, Exhibition center and Archive) in a singular language façade that is welcoming and protective. It's turned inwards, thus creating a central courtyard that opens towards the lake.





Taichung Cultural Centre

RTA-OFFICE

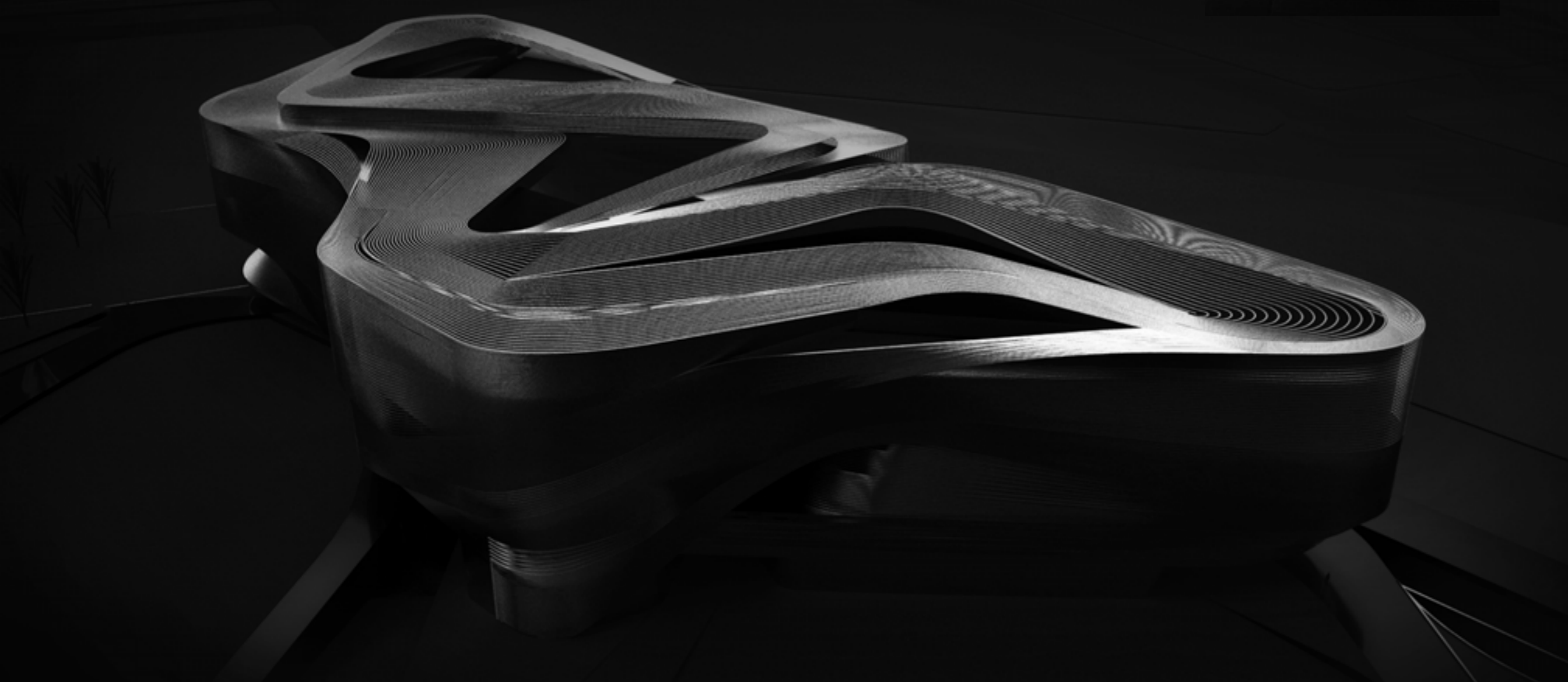
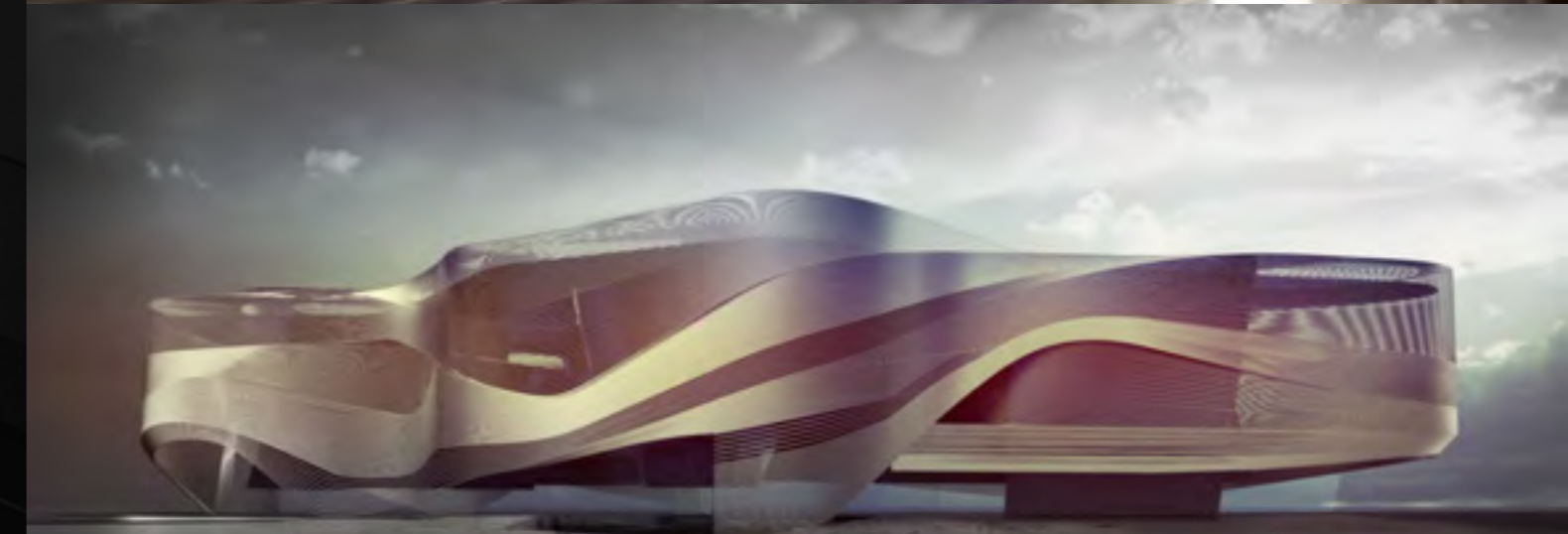
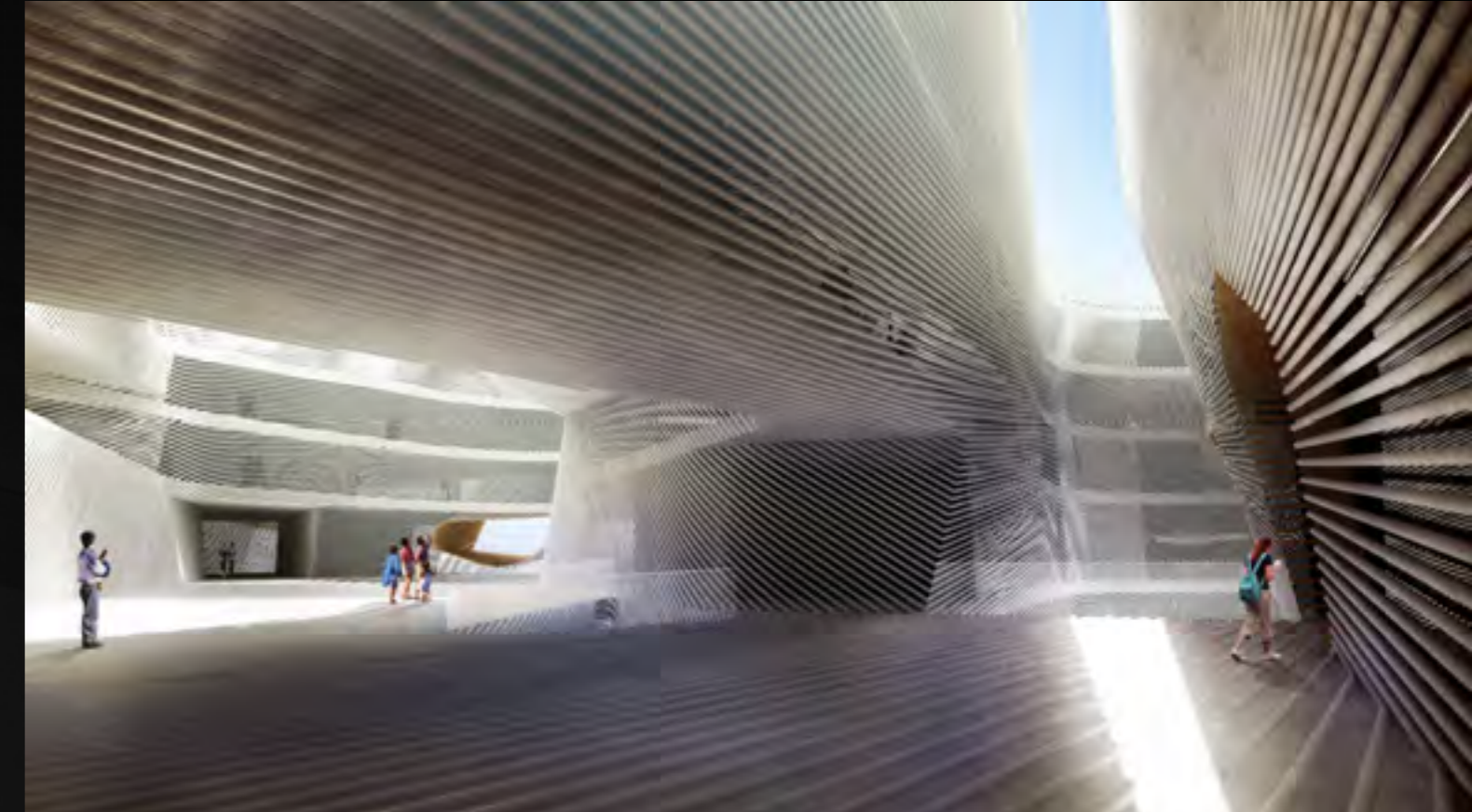
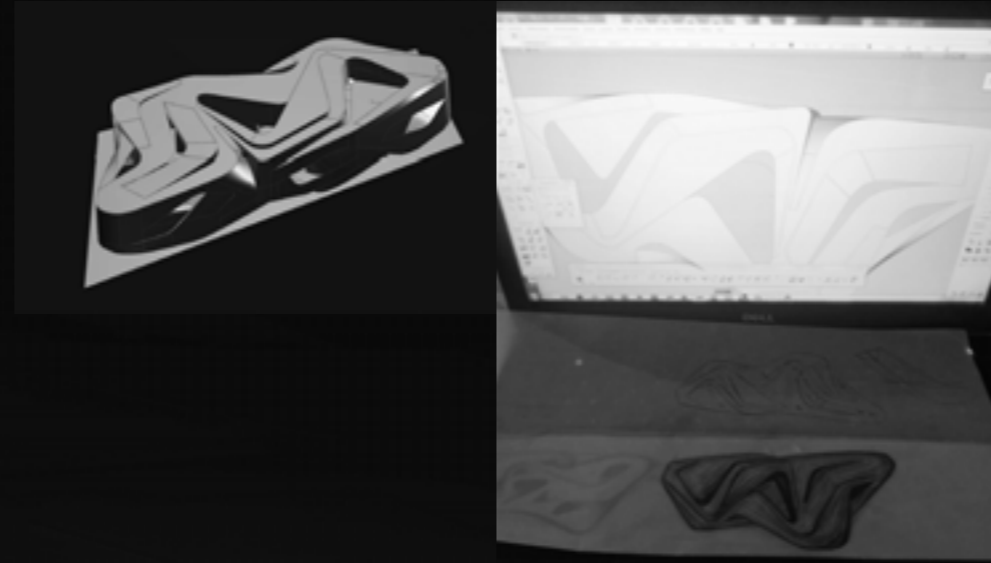
Design Competition

Taichung / Taiwan

2013



Taichung City Cultural Center in Taiwan is a container of interwoven elements. It is reminiscent of the traditional Taiwanese basket woven from bamboo strips. The façade is the best representation of that, creating an envelope that encloses the different functions on the inside while providing glimpses into the building through the gaps.



Driven by Excellence.

M-Class Exhibition

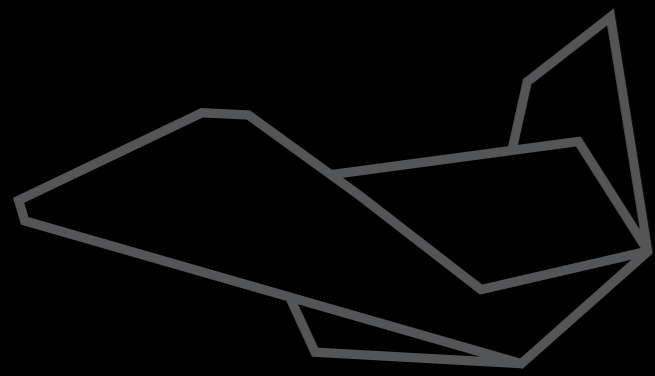
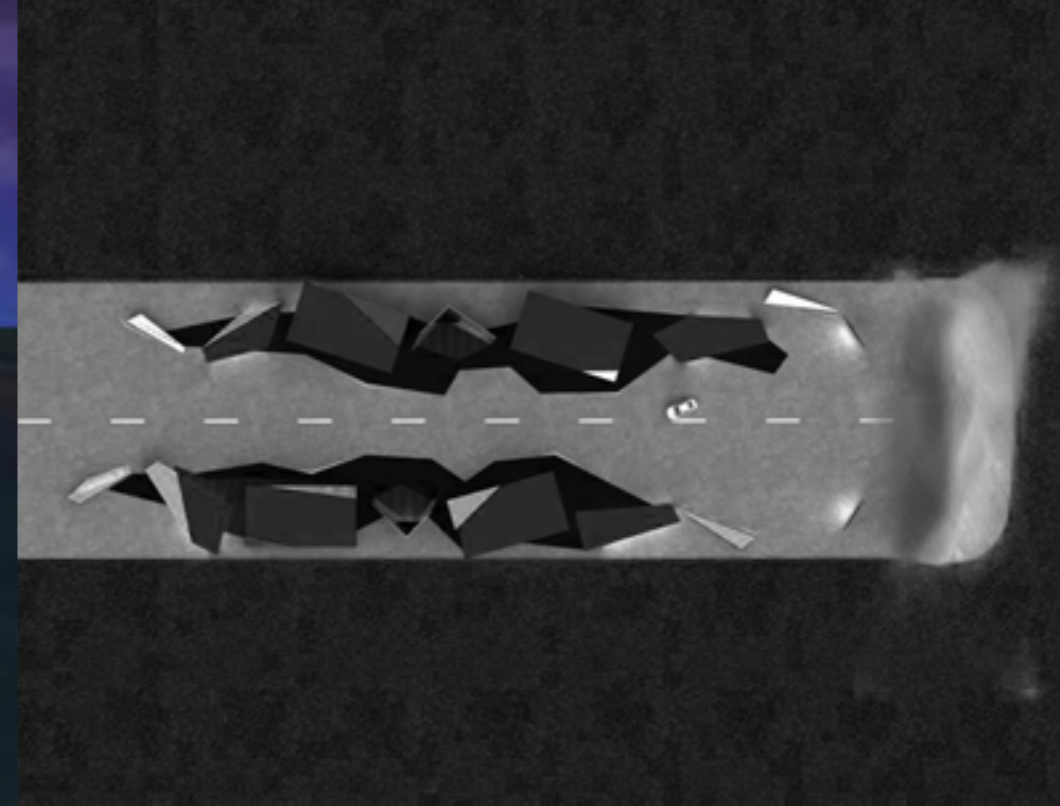
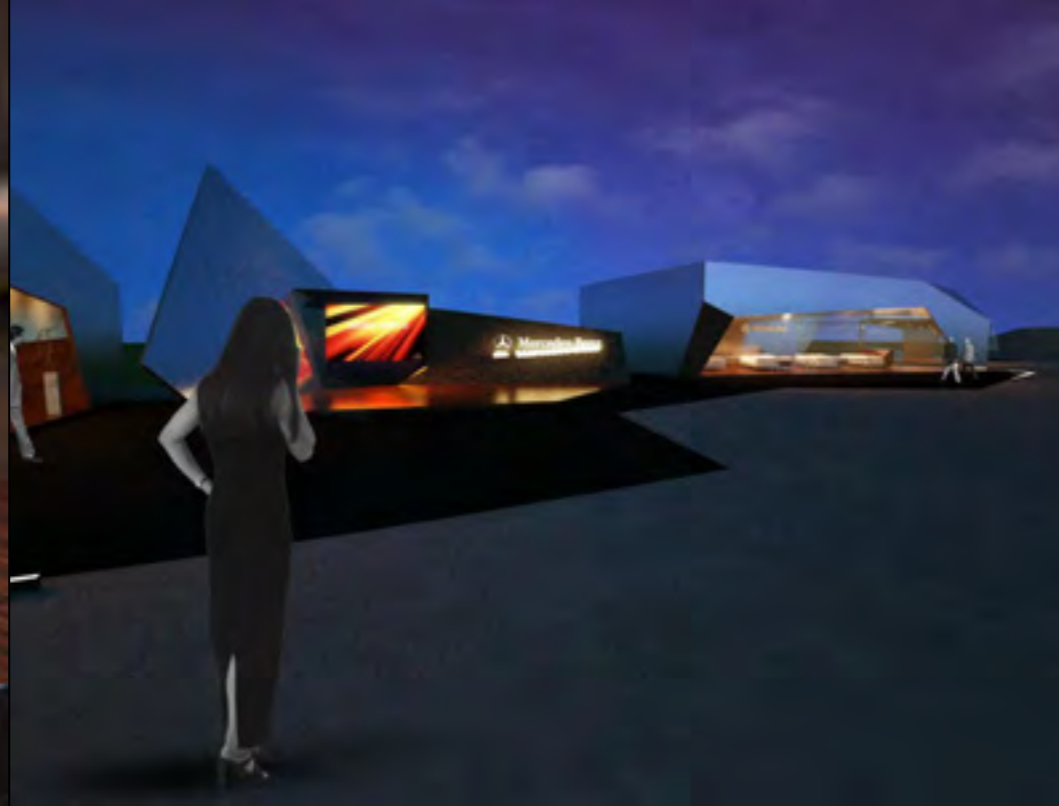
DVP China / Mercedes Benz

Sanya / China

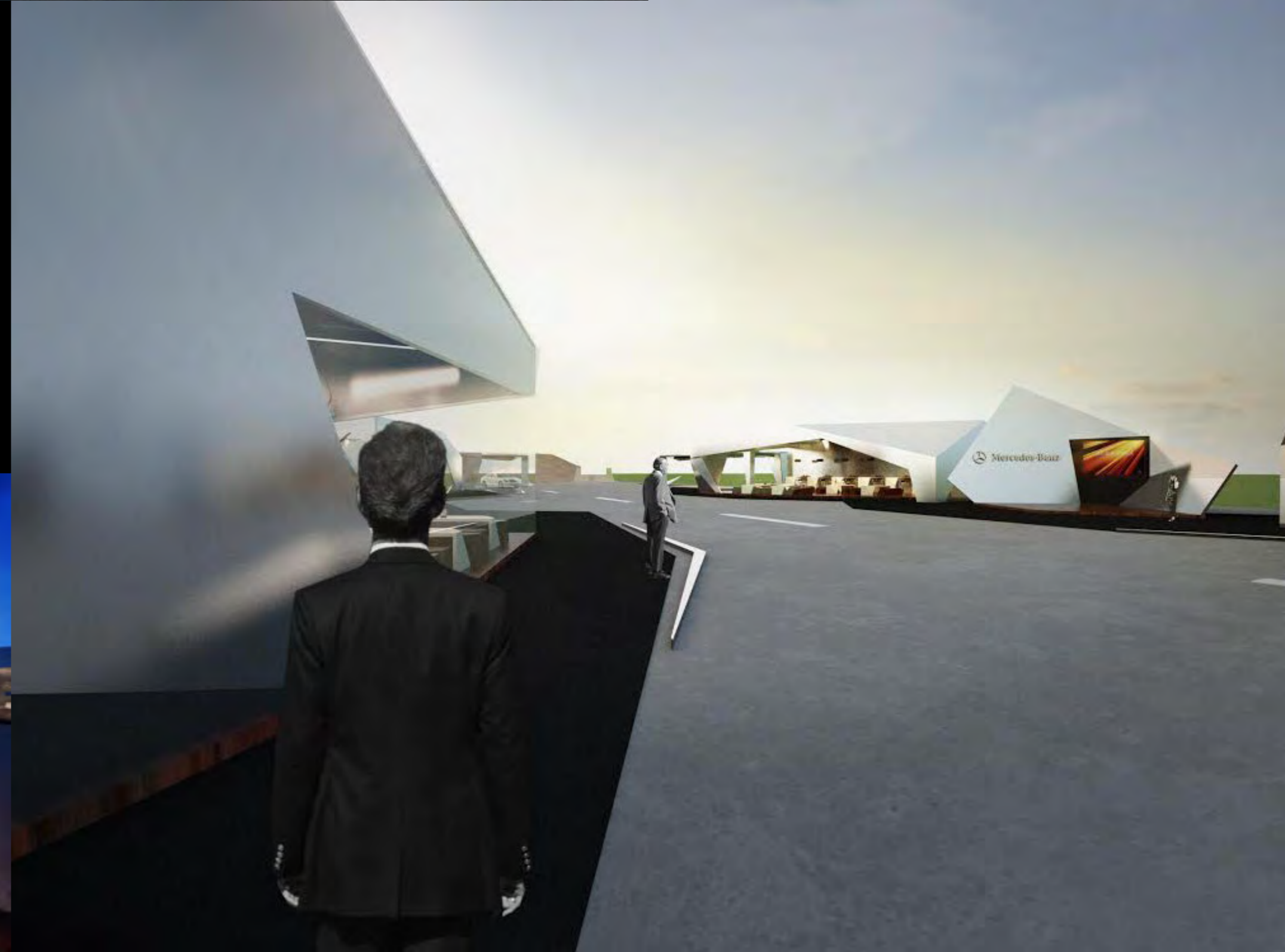
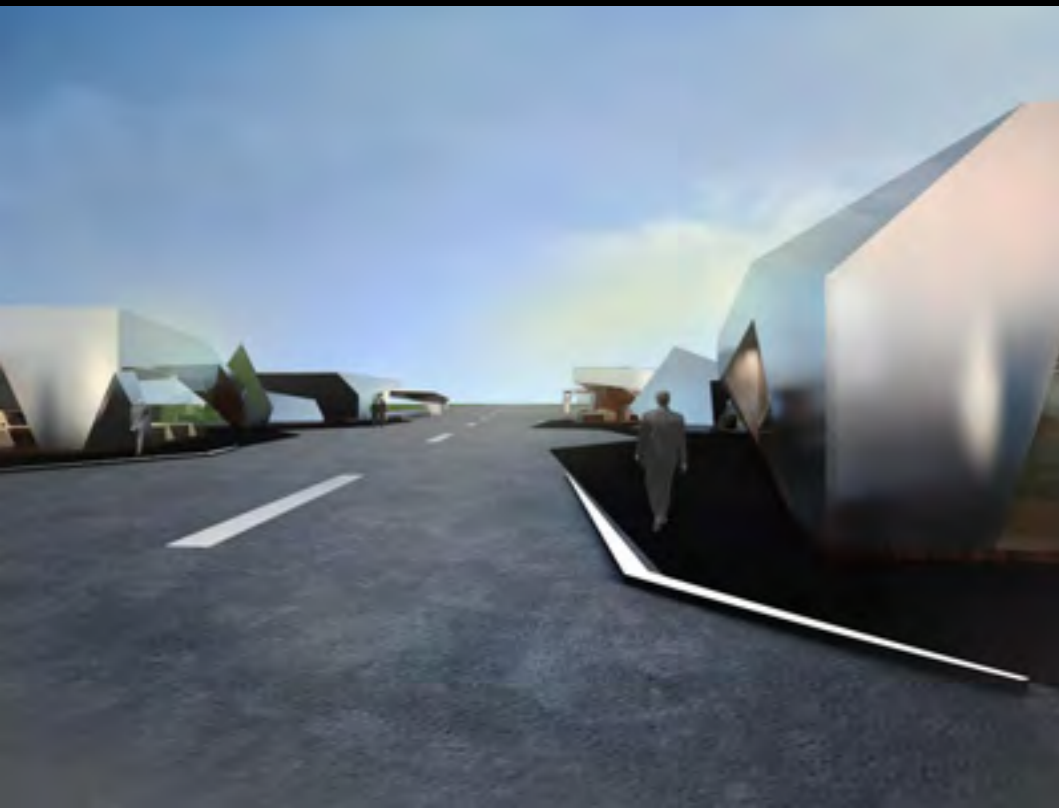
2012

 Mercedes-Benz





Based on Mercedes-Benz brand language I developed a sequence of spiral metal forms that provide a perfect shelter for the presentation of the new M Class model of the prestigious brand for DVP.

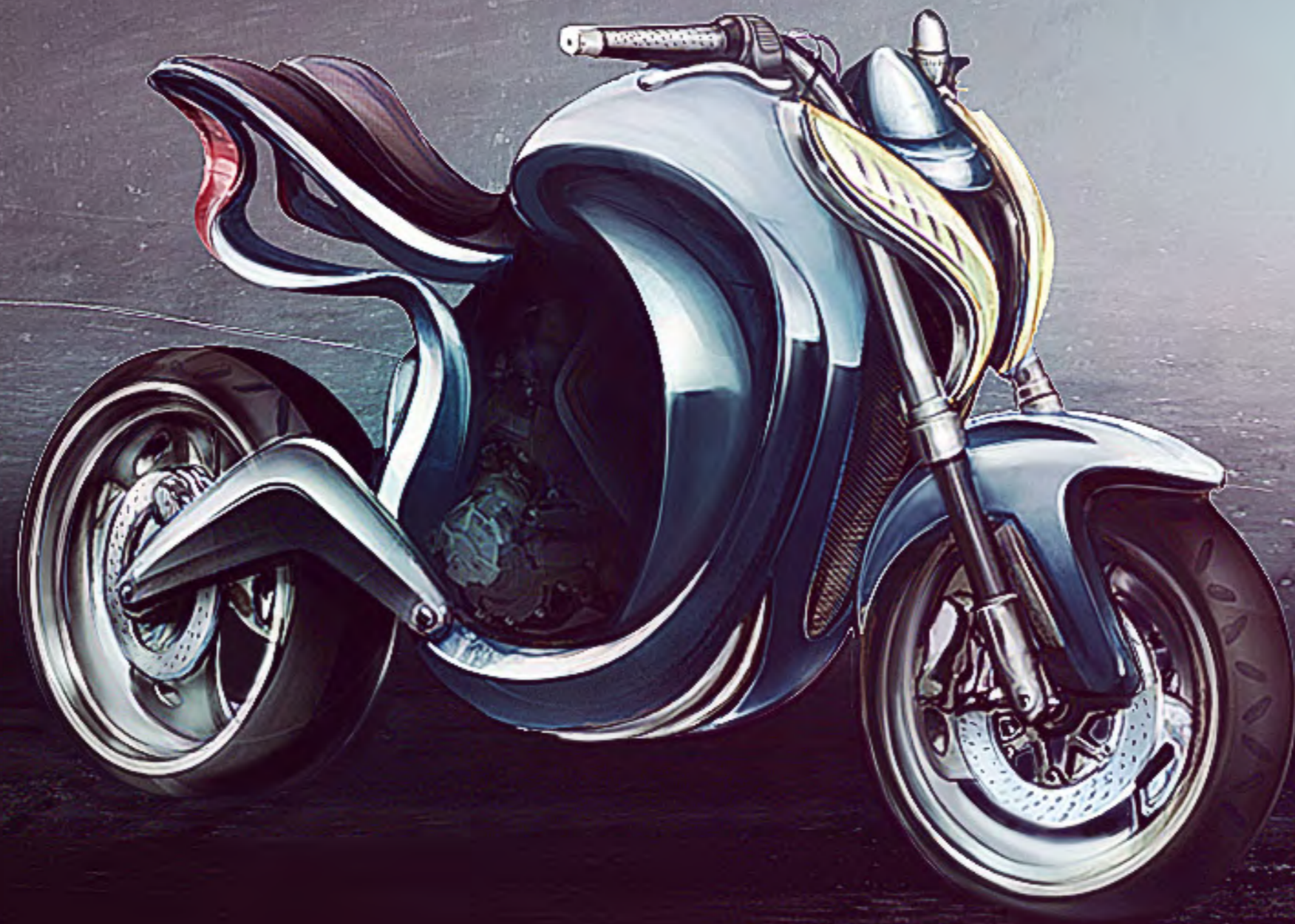


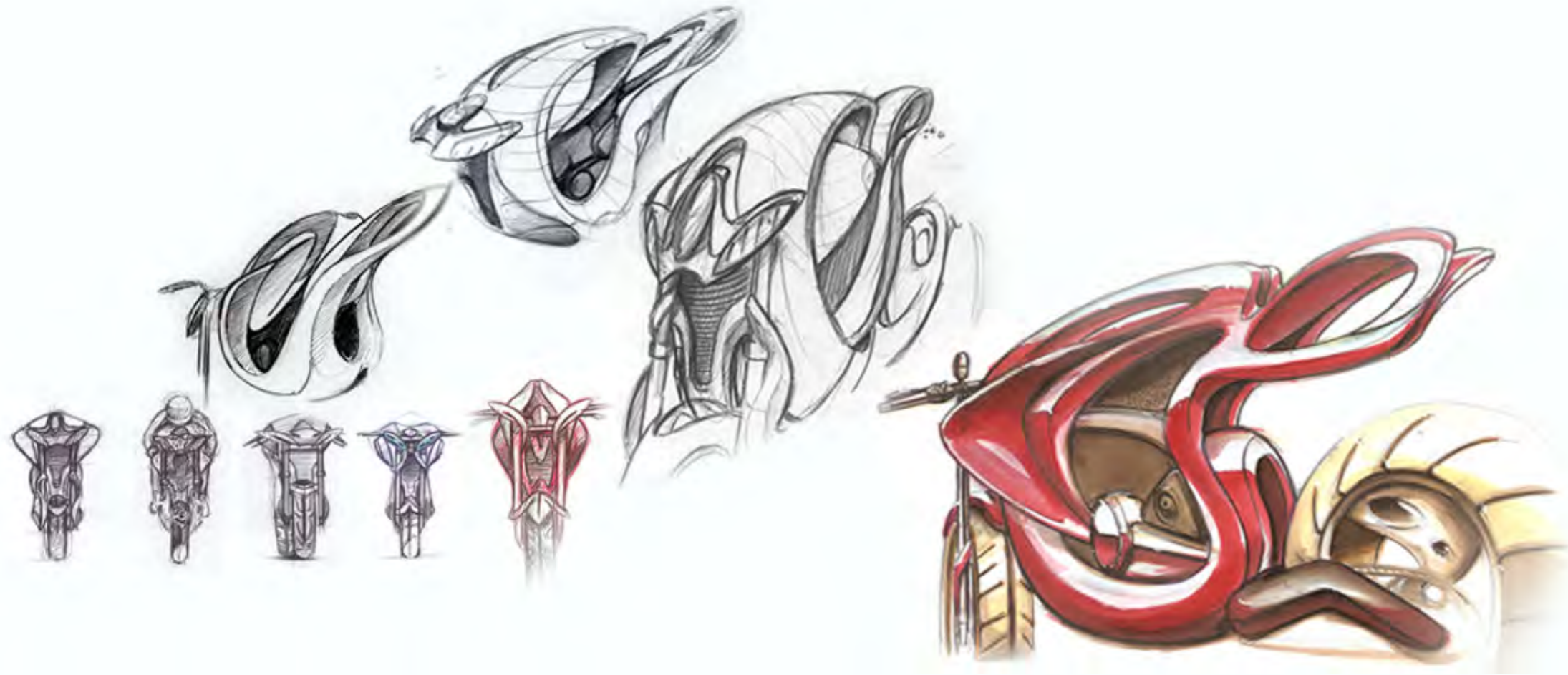
Polen

Design School

IED / Barcelona

2009





Dynamic shapes relate to a wasp. The design is based on the idea that this 600cc naked middleweight sport bike is a high-performance engine, with an anything, anytime, anywhere attitude. An upright, comfortable riding position with ideal weather protection. Light and effortless handling for urban use, comfortable long-distance cruising, and serious sport riding, too.



Fonema

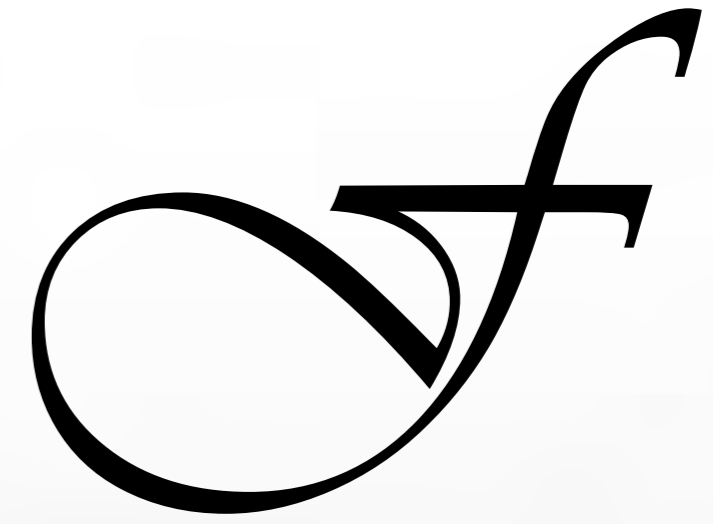
Design School

IED / Barcelona

2009



An innovative and exciting take on a classic Station Wagon that provides the driver with the look and feel of a Sedan. Calligraphic brush strokes bring modern sharp edges and bold accents to life that allow for a dynamic shape on the large form.



Onthi

Design School

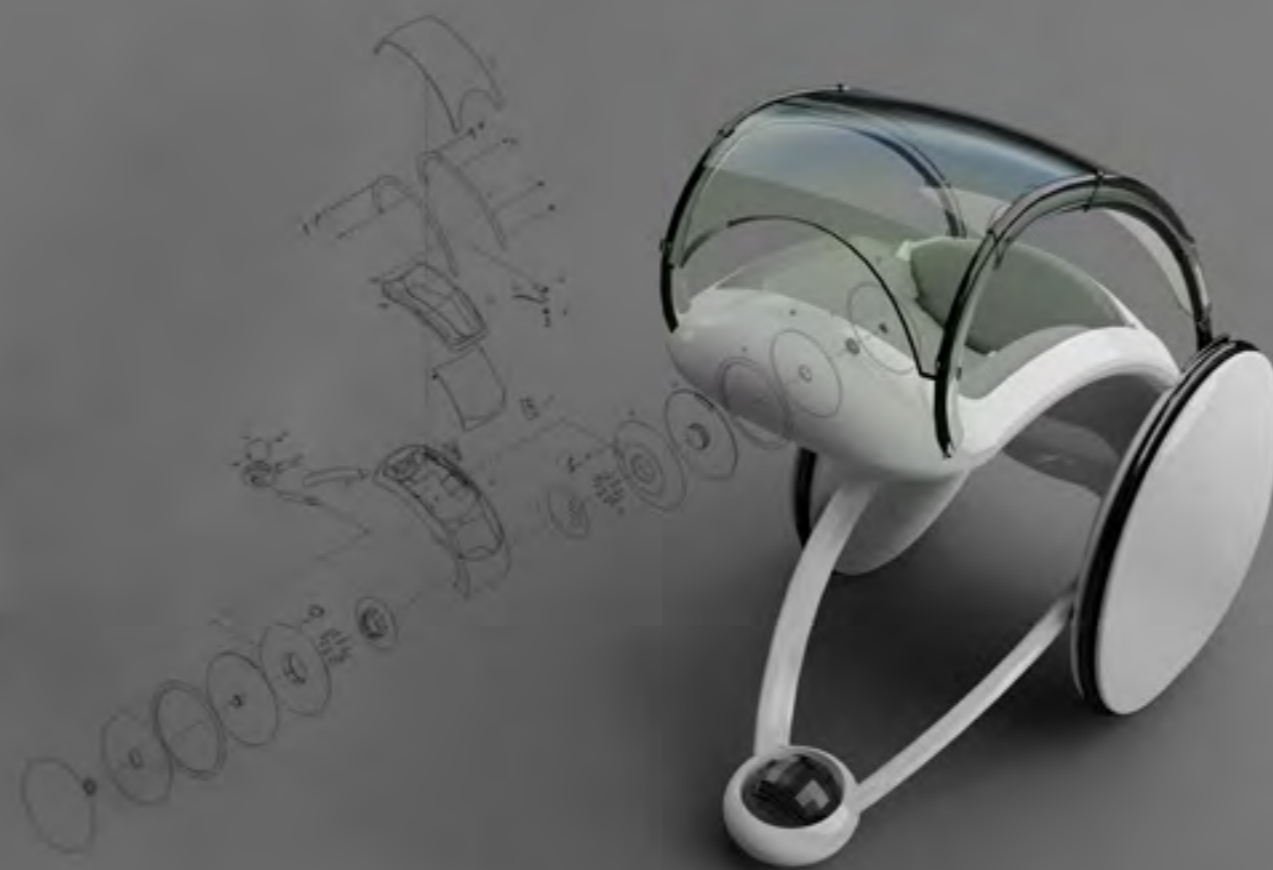
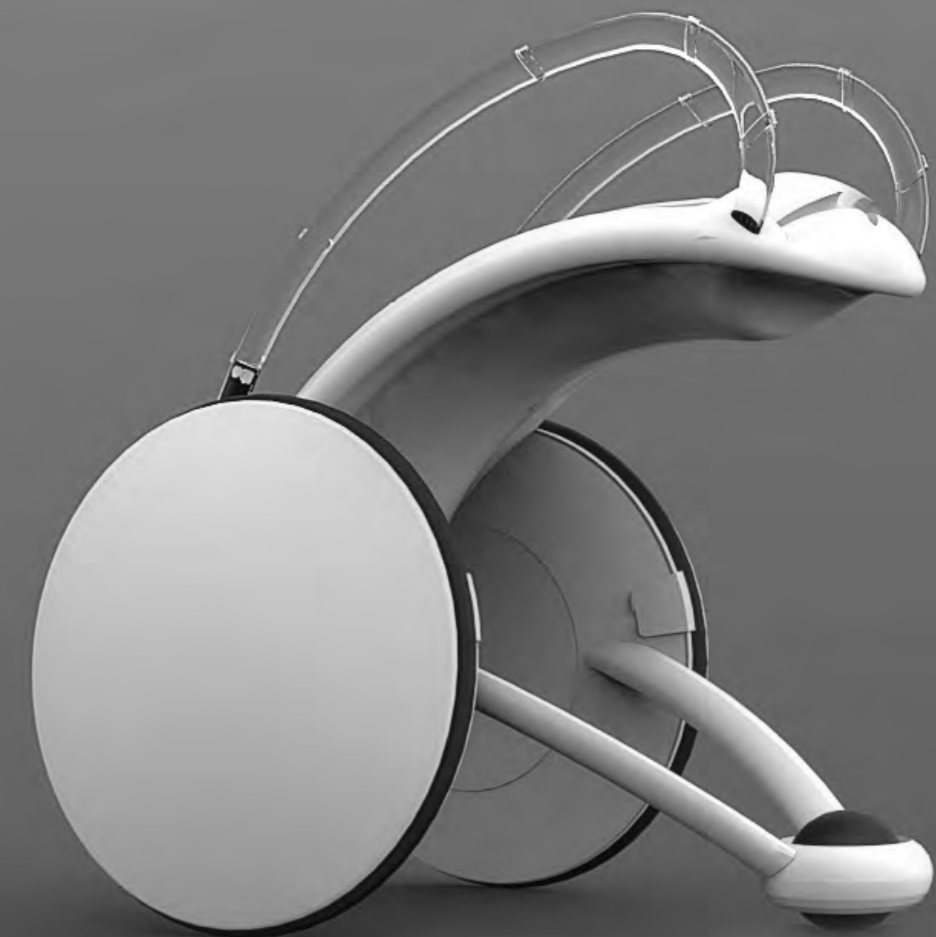
IDC / Caracas

2007





A stroller is one of the most important and essential pieces of baby equipment, not only for practicality reasons but also as a status symbol. An equally important yet entirely different product is the wheelchair. Merging the two leads to a lightweight, modern aluminum structure, which runs on 700cc bicycle wheels and is covered by waterproof fabric.



Re-Fresh

Design Competition

HandMade / Barcelona

2010





Discarded electronics and computer technology lack any sustainability, thus commending the need to recycle or to reuse electronic waste. The proposal is to reuse parts of e-waste to sustainably produce fashion sunglasses partnering with StEP (Solving the E-waste Problem Initiative) to develop a pilot project meant to contribute to the solution of e-waste problems.



Serie 1

Design + HandCrafted

HandMade / Barcelona

2010





These two series of Eyewear are my first approach to Eyewear design and reflect a study of different Design and Handcraft capabilities. The ten models from Series One as well as the ten models within Series Two are all entirely handcrafted. All the products were for retail and allow the consumer to own a unique, singular product.



Serie 2

Design + HandCrafted

HandMade / Barcelona

2010





While Series One is breaking the conformity and known language of glasses, Series Two moves into a more minimal and detail oriented approach that enhances the singularity of the handcrafted process.

